

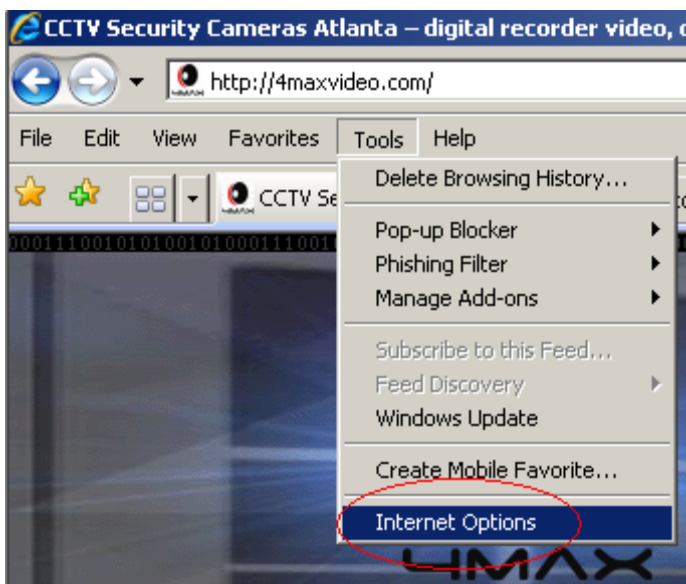
Procedure for viewing Live video remotely.

With most versions of Internet Explorer there will be some security issues to overcome. In steps 1 – 6 we will show you how to configure your browser settings to allow the software and ActiveX controls to be installed.

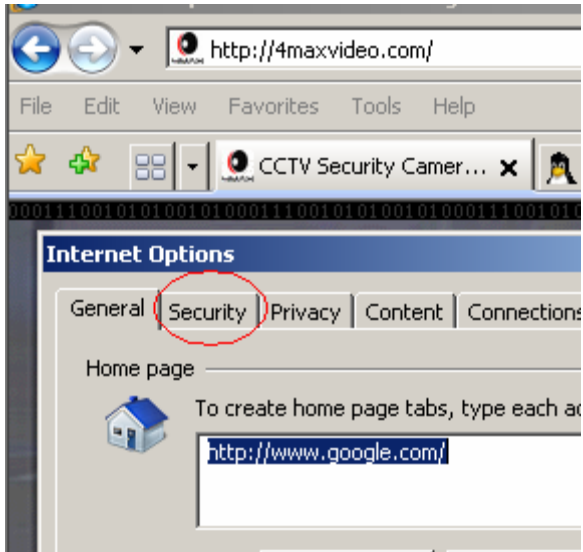
1. Open Internet Explorer and click the tools button.



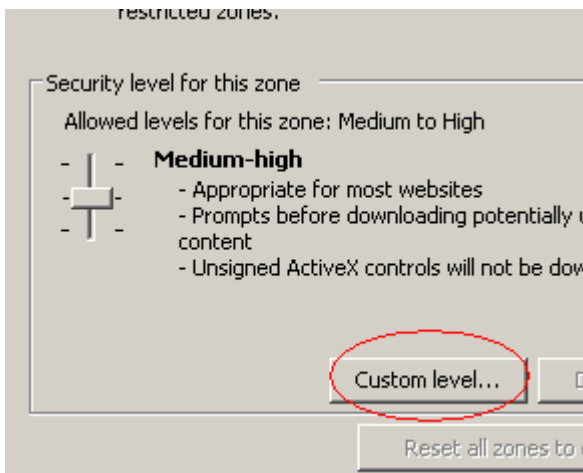
2. Select the Internet Options button.



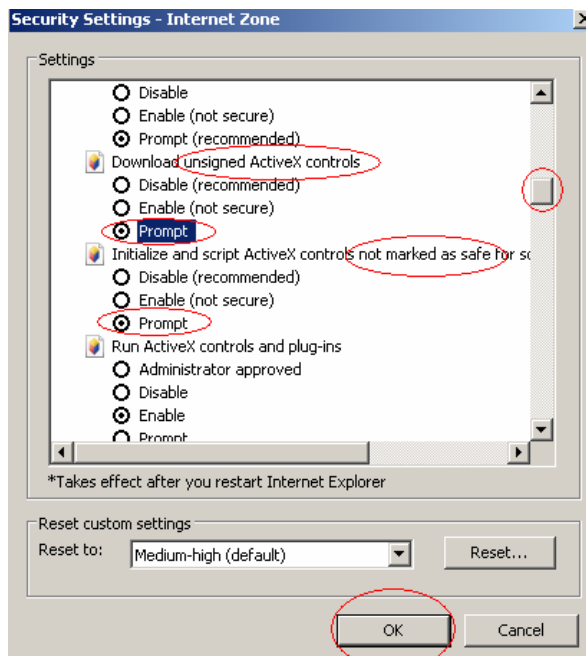
3. Click on the Security tab.



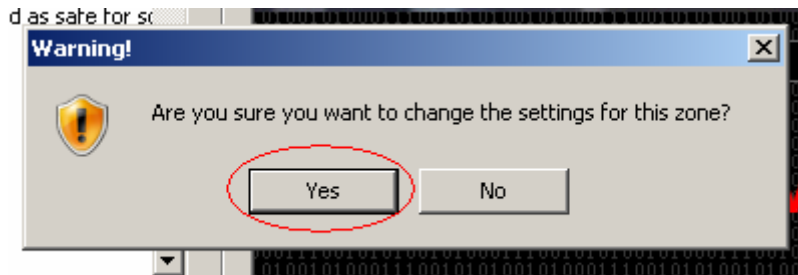
4. Select the Custom Level button.



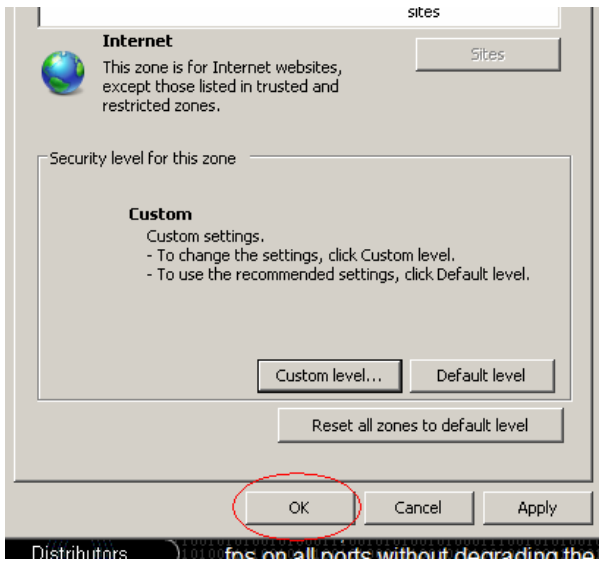
5. Using the scroll bar, scroll down until you see “ Download unsigned ActiveX controls” and “Initialize and script ActiveX controls not marked as safe for s”. Select Prompt for both and then click Ok.



5. Select Yes to the Are you sure warning window.



6. Select Ok.



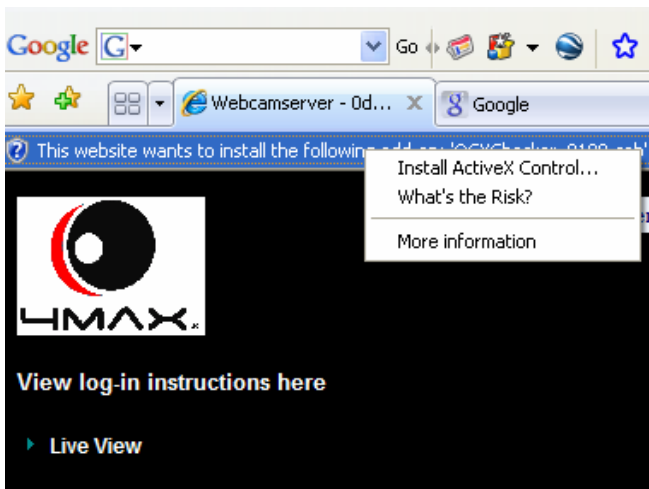
7. Now, enter the IP or URL address into the address field in Internet Explorer and press Enter.



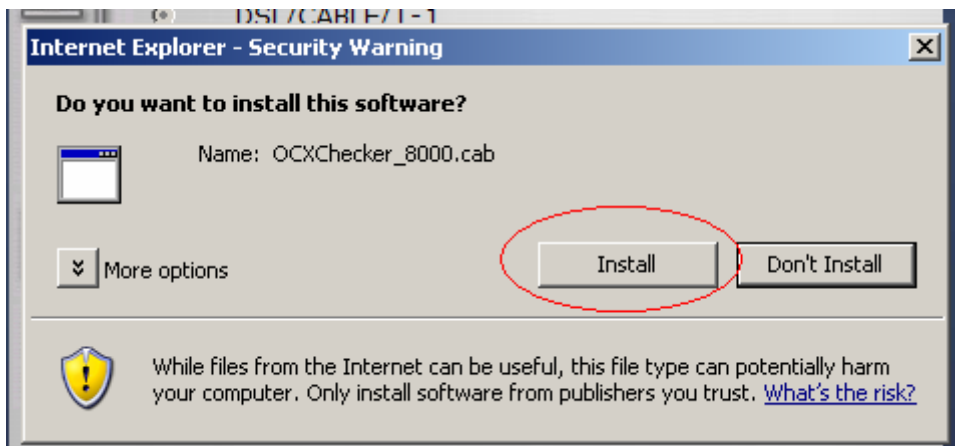
8. Enter your USERNAME and PASSWORD.



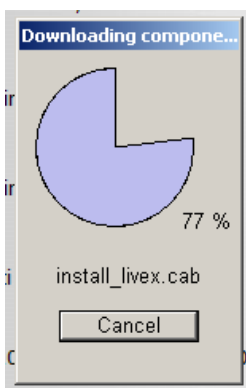
9. More than likely you will see a warning bar appear. It will read "This website wants to install the following add-on. Click on the bar and select "Install ActiveX Control".



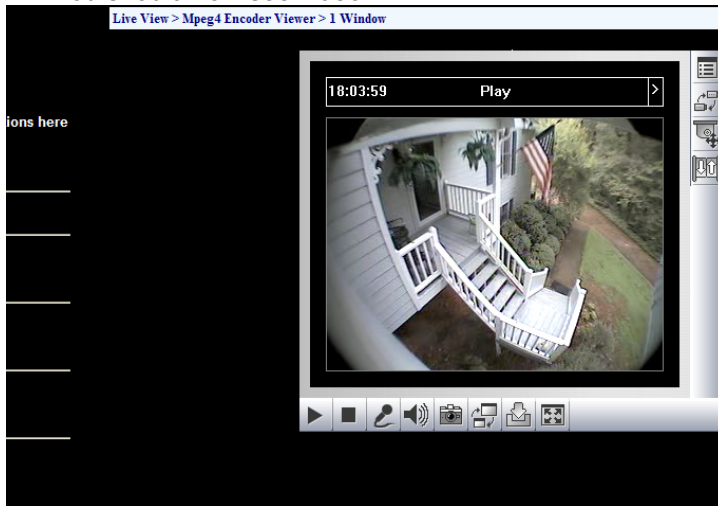
10. Click Install.



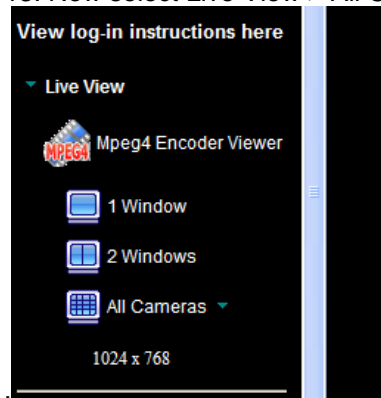
11. You will see a little screen showing the progress of the download.



12. You should now see video.

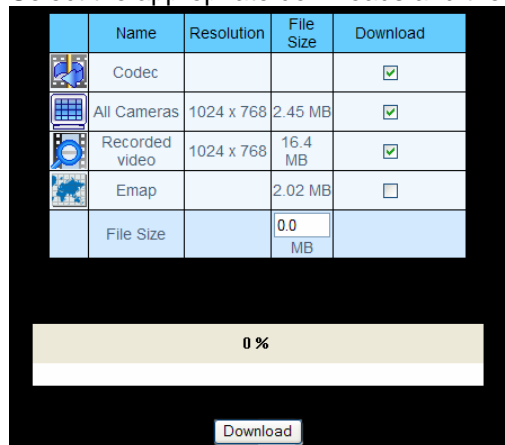


13. Now select Live View > All Cameras > 1024x768

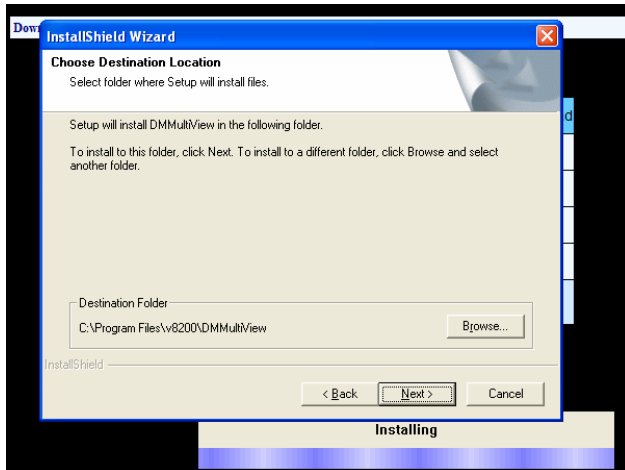


14. You should now see the download area. It will be necessary to download Codec, All cameras software and the Recorded video software to utilize your DVR's many features.

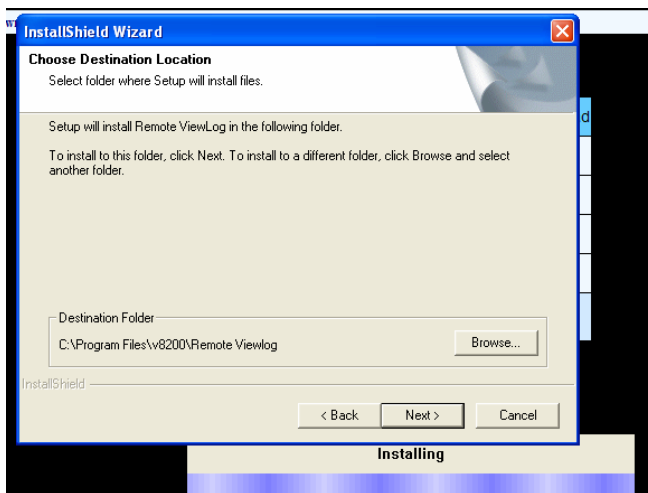
Select the appropriate downloads and then click "Download".



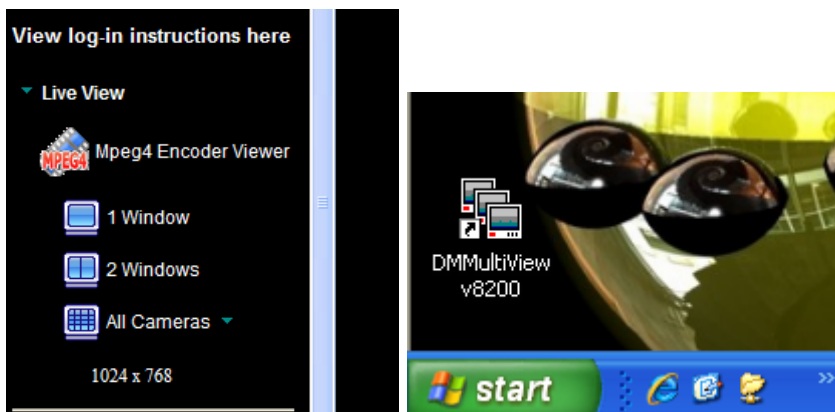
15. After some time, the Live Video will download and then you will see an InstallShield Wizard window. Click NEXT.



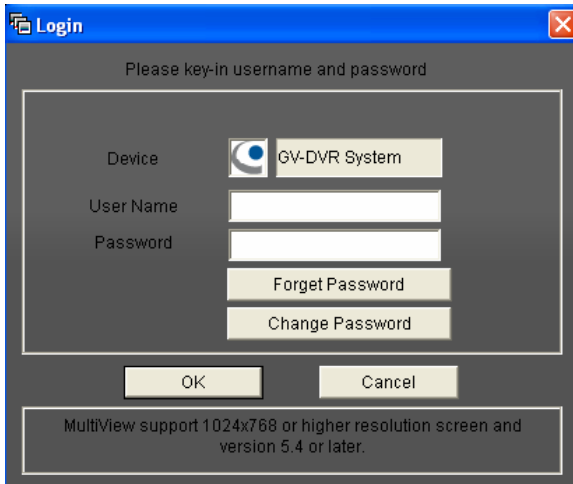
16. Next, the Live Video will download and then you will see an InstallShield Wizard window. Click NEXT.



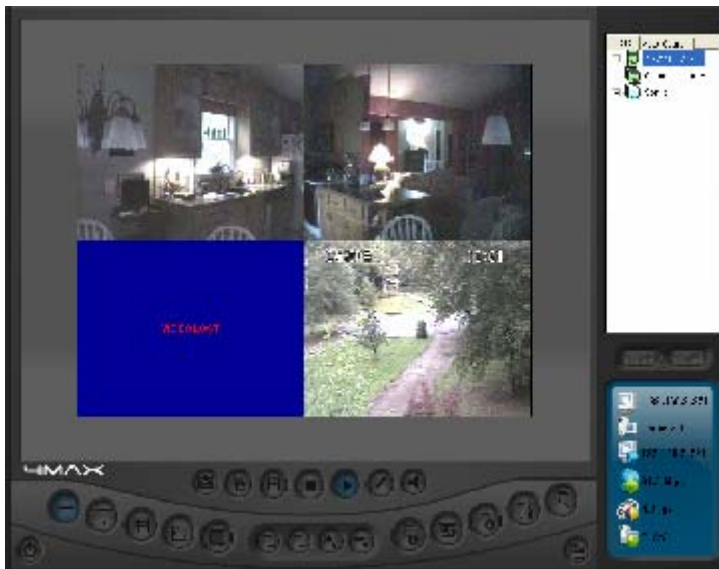
17. After the install is complete you can either click on the 1024X768 link on the web page again or double click on the new icon that was created on your desktop.



18. You should now have a logon screen. Enter your username and password, then click OK.



19. You should now see the live cameras on your screen.



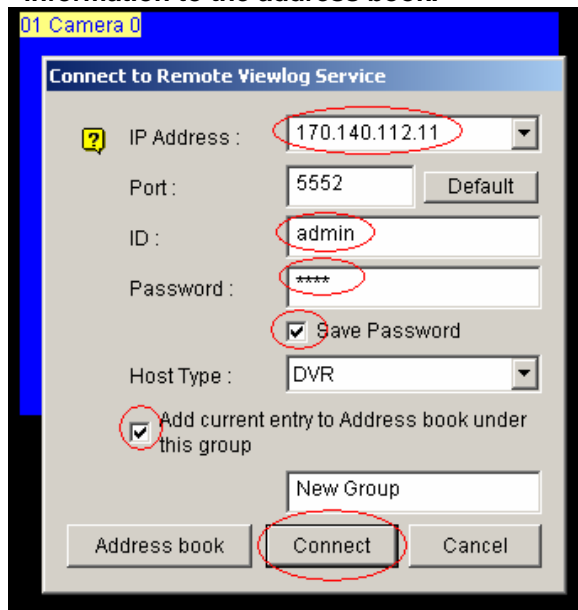
Procedure for viewing old video remotely.

1. With the Live Video window open, look for the button that looks like a piece of paper with a magnifying glass over it. Click on this button to view old video.



2. After some time the Recorded Video screen will appear and a Connect to Remote Viewlog Service screen will pop up. Enter the ip address into the IP Address field, username and password. Select Save Password and Add current entry to address book. Then click Connect.

***Remember that next time you get to this screen, you have already saved the information to the address book.**



3. You should now be able to view old video.